[illegible]

HAMMONDCARE

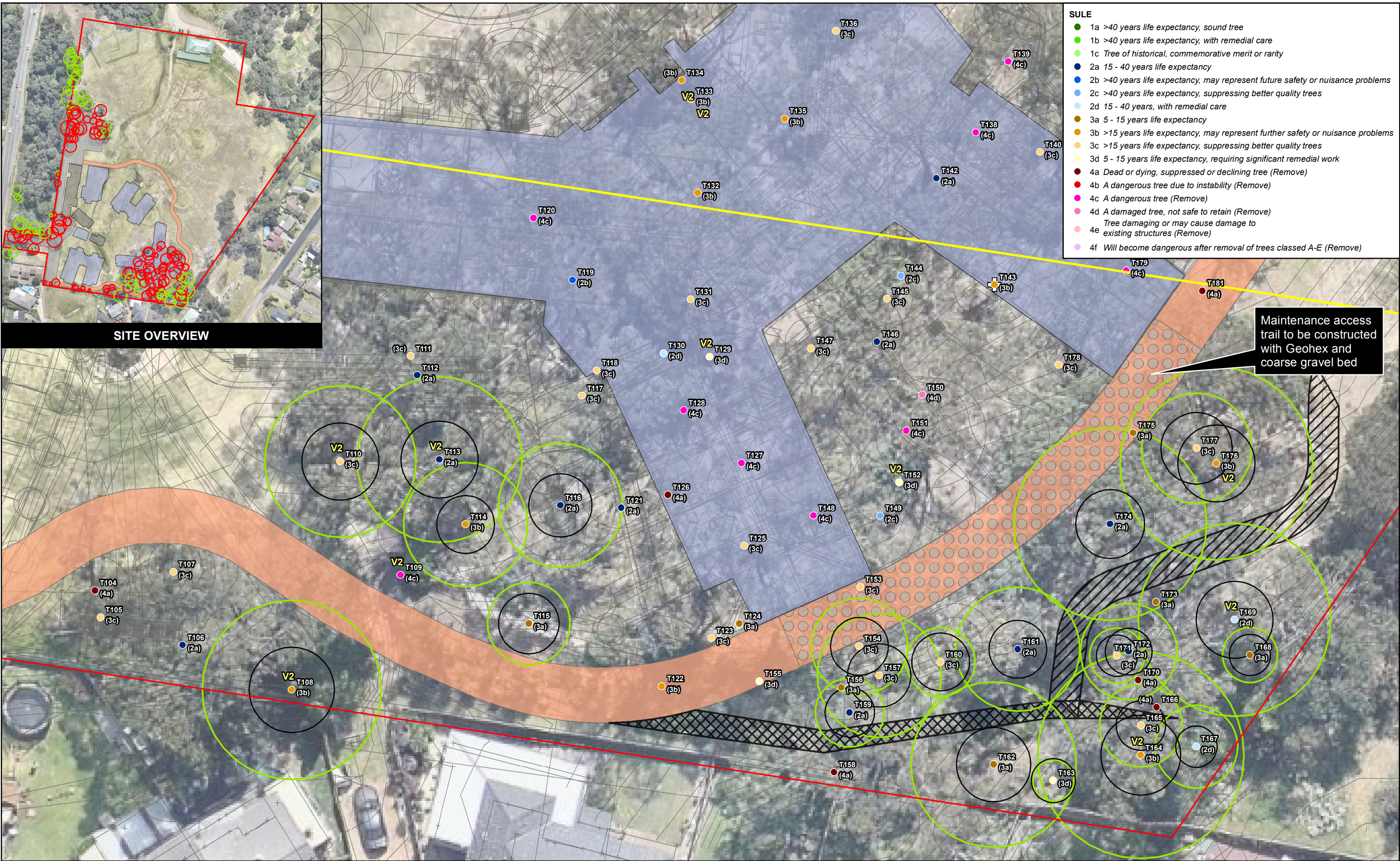
JOB#	SHEET#	ISSUE	NORTH
15-274	101	T03	

ARCADIA
LANDSCAPE ARCHITECTURE



SITE OVERVIEW

- SULE**
- 1a >40 years life expectancy, sound tree
 - 1b >40 years life expectancy, with remedial care
 - 1c Tree of historical, commemorative merit or rarity
 - 2a 15 - 40 years life expectancy
 - 2b >40 years life expectancy, may represent future safety or nuisance problems
 - 2c >40 years life expectancy, suppressing better quality trees
 - 2d 15 - 40 years, with remedial care
 - 3a 5 - 15 years life expectancy
 - 3b >15 years life expectancy, may represent further safety or nuisance problems
 - 3c >15 years life expectancy, suppressing better quality trees
 - 3d 5 - 15 years life expectancy, requiring significant remedial work
 - 4a Dead or dying, suppressed or declining tree (Remove)
 - 4b A dangerous tree due to instability (Remove)
 - 4c A dangerous tree (Remove)
 - 4d A damaged tree, not safe to retain (Remove)
 - 4e Tree damaging or may cause damage to existing structures (Remove)
 - 4f Will become dangerous after removal of trees classed A-E (Remove)



Maintenance access trail to be constructed with Geohex and coarse gravel bed

Legend

- Study site
- 40m setback from southern boundary
- Proposed SFPP (aged care dwellings)
- 'Other' development (non aged care)
- Carpark/road
- Maintenance access trail
- Existing retaining wall
- Proposed retaining wall
- Tree for retention
- Structural Root Zone
- Habitat tree
- Visually significant tree

V2

Aerial source: Nearmap

0 5 10 m

Disclaimer: The mapping is indicative of available space and location of features which may prove critical in assessing the viability of the proposed works. Mapping has been produced on a map base with an inherent level of inaccuracy, the location of all mapped features are to be confirmed by a registered surveyor.

PROJECT & MXD REFERENCE
Macquarie Road, Cardiff
A15069_T004

DATE & ISSUE NUMBER
21/02/2017
Issue 1

SCALE & COORDINATE SYSTEM
1:250 @A3
GDA 1994 MGA Zone 56

TITLE
Tree Retention Plan Within 40m of Southern Boundary

Document Path: N:\GIS STORAGE\N Drive\A15069_MacquarieRd_Cardiff\MXDs\A15069_T004.mxd

Travers
bushfire & ecology
www.traverseecology.com.au